

Hills Model Railway Society Inc.
PO Box 555
Castle Hill NSW 1765

ISSUE 04 - OCTOBER 2015

PUBLICATION OF THE HMRS INC.

Hills Rail Time

Exhibitions

HMRS Major

Fundraiser

Castle Hill

2016.

Our annual Model Railway Exhibition will be held on

30/31st July 2016.

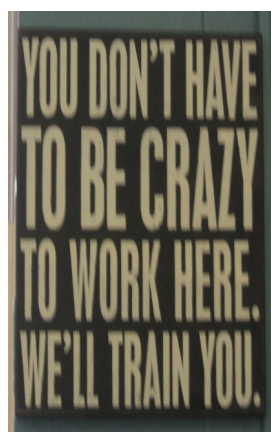
This year at the Harvey Lowe Pavilion Castle Hill show-ground. All members are expected to be in attendance over the week-end and remember many hands make light work.

AGM 2015 will be held at the Society Rooms on Friday 27th November at 8pm sharp.

Would you like to be included on the committee next year, if so, forms are available the secretary and they are to be returned 7 days prior to the AGM

Missing rolling stock.

Please check you rolling stock, If you have mislaid anything let us know and if you have anything that is not yours, please return it to the rooms.



What do I need?

I need feedback from our society members, your ideas, your articles, and what you would like me to investigate and what you would like published, so the feedback is important. I may be contacted at publicofficer@hmrs.org.au with your ideas and any information you would like me to list.

I STILL NEED IT

Christmas Party 2015 will be held at Northmead Bowling Club on Saturday 12th December from 7pm.

THIS IS NOT a BYO function. Numbers are required ASAP see Mr R Peterson.



Layout damage. We still need to remind members of things that seem to be ongoing within the society with our layouts. Again, we ask, please be careful with the layout scenery and buildings etc. as on a monthly basis there is more damaged. If you damage it, report it to the layout coordinator or committee for repairs.

At the June committee meeting your HMRS committee discussed the possibility of creation of a **Facebook** account.



It has happened. What we need now is your photographs of your layouts if you have one or your models etc. Forward your photo's or anything to your committee for approval..

We value your input.

Modelling Competition.

November is also the cut-off month that your entries for the modelling competition.

Your models need to be submitted by the AGM and left for judging.

Results will be announced at the Christmas party.



Your Health

Here is the start of a new item.

Many parents would be horrified to learn that for every three mouthfuls of Nutri-Grain, one is just sugar, while a small bowl contains twice as much sodium (salt) as a small packet of chips.



Therefore I ask the question Are chips good for you?.

No Hints and Tips this month. Has not happened, no feedback.

The MG Car Club visit will be Wednesday 18th November at the Club Rooms. If you would like to get involved and run some trains, fly the flag you are most welcome. They will BYO their own lunch

Due to the numbers of visitors we are having lately could you please keep the society kitchen and rooms clean as possible.

Smugglers Cove.



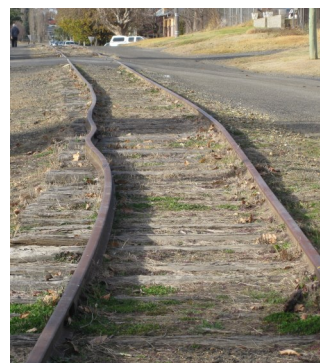
Twenty Three



Do you know this man in deep thought?



Is this the new State Rail works?.



Question to Members.

Would you like to have or see more clinics and demonstrations on Friday nights? If so, what are your requests, ideas, please inform the committee so they can be organised.



**The Tuesday Trainees without the photographer.
Yes, the rooms are well used, other trainees welcome.**

Another where is it?





Santa HO HO HO (N N N)

Do you know where this photograph was taken?



Answer next issue.

*Answers to the quiz in the last issue.....
Just outside Young NSW*

WE'RE ON THE WEB – WWW.HMRS.ORG.AU

Email: secretary@hmrs.org.au

What track are we running on? HO or N gauge, it does not make any difference.



***Oops, Who
owns these?***

